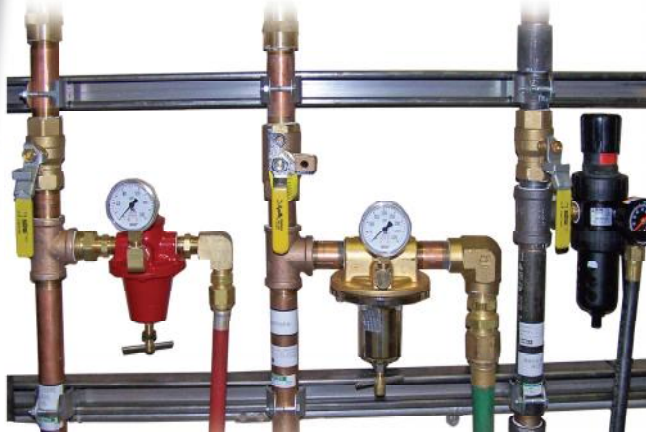
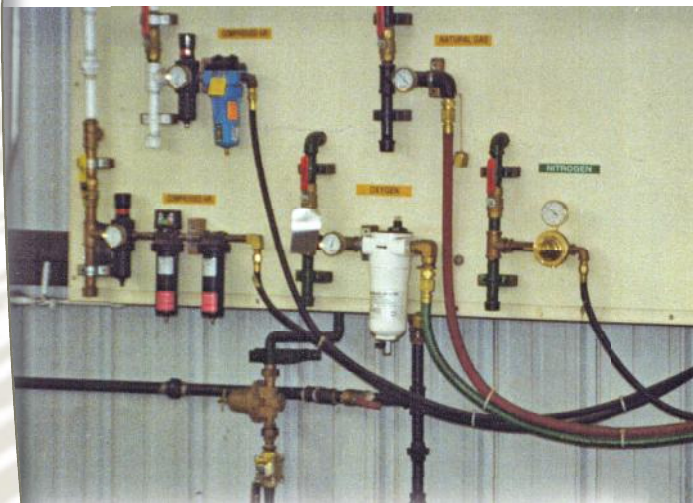


# Plasma Station Outlet Equipment

## Plasma gas regulation system



Closeup of typical components provided (mounting hardware by customer)



Typical in-field installation (mounting by customer)

### Overview:

Station Outlet consists of pre-assembled piping with regulators for machine air and selected plasma gases.

The appropriate fittings are attached to the outlet side to mate with the Messer supplied hoses. The Station Outlet should be mounted in close proximity to the longitudinal axis powertrack entry point.

The customer is responsible for the piping to the inlet side of each Station Outlet assembly.

Let the experts at Messer ease your installation task by providing all the correct filters, regulators, valves and fittings. We'll source and assemble so you have one less thing to worry about.

### System Description:

The Plasma Station Outlet Equipment provides filters, regulators, and shut-offs for gases used in a given application.

### Application:

Available on all Messer machines; Station Outlet Equipment is required for all machine installations.

**MESSER** 

Cutting Systems

Messer Cutting Systems, Inc.  
W141 N9427 Fountain Boulevard  
Menomonee Falls, WI 53051

Phone: 262-255-5520

E-mail: [sales@messercutting.com](mailto:sales@messercutting.com)

Fax: 262-255-5170

[www.messercutting.com](http://www.messercutting.com)

**Messer Cutting Systems**  
*Your Productivity Process People®*

The descriptions, technical data, and illustrations contained in this document are provided for guidance purposes only and are non-binding. The manufacturer reserves the right to make alterations to products without notice.  
© 2000 Messer Cutting Systems, Inc.

10/071M

OPTIONS

TABLES

CONTROLS

CUTTING MACHINES